

Journal of Biomedical Optics

SPIDigitalLibrary.org/jbo

Time-gated cell imaging using long lifetime near-infrared-emitting quantum dots for autofluorescence rejection

Sophie Bouccara
Alexandra Fragola
Emerson Giovanelli
Gary Sitbon
Nicolas Lequeux
Thomas Pons
Vincent Lorientte

Time-gated cell imaging using long lifetime near-infrared-emitting quantum dots for autofluorescence rejection

Sophie Bouccara, Alexandra Fragola, Emerson Giovanelli, Gary Sitbon, Nicolas Lequeux, Thomas Pons, and Vincent Loriette*

Laboratoire de Physique et d'Etude des Matériaux, UMR 8213, ESPCI Paristech, CNRS, UPMC, 10 rue Vauquelin, Paris, France

Abstract. Fluorescence imaging is a promising technique for the detection of individual cell migration. Its sensitivity is, however, limited by a high tissue autofluorescence and a poor visible light penetration depth. In order to solve this problem, the fluorescence signal peak wavelength should lie in an absorption and diffusion free region and should be distinguishable, either spectrally or temporally, from the autofluorescence background. We present, here, the synthesis and characterization of low toxicity Zn–Cu–In–Se/ZnS core/shell quantum dots. Their fluorescence emission wavelength peaks around 800 nm, where the absorption and scattering of tissues are minimal. They are coated with a new ligand, which yields small, stable, and bright individual probes in the live cell cytoplasm, even 48 h after the labeling. Furthermore, these near-infrared-emitting quantum dots have a long fluorescence lifetime component (around 150 ns) compared to autofluorescence (<5 ns). Taking the advantage of this property and coupling these probes to a time-gated detection, we demonstrate efficiently the discrimination between the signal and short lifetime fluorescence such as the autofluorescence. This technique is supported by a method we developed, to massively stain cells that preserves the quantum dot stability and brightness for 48 h. © 2014 Society of Photo-Optical Instrumentation Engineers (SPIE) [DOI: 10.1117/1.JBO.19.5.051208]

Keywords: quantum dots; fluorescence; microscopy; detection; cells.

Paper 130546SSRR received Jul. 31, 2013; revised manuscript received Dec. 5, 2013; accepted for publication Dec. 5, 2013; published online Jan. 6, 2014.

1 Introduction

Several *in vivo* cell tracking techniques based on the magnetic resonance imaging or positron emission tomography¹ have been developed but remain challenging for rare and individual cell detection, mainly because of their low-spatial resolution. On contrary, the fluorescence microscopy allows a cell scale detection, but is limited by a low sensitivity. Indeed, absorption and scattering of visible light, as well as tissue autofluorescence degrade image contrast. Time-gated detection has been developed for fluorescence lifetime imaging microscopy measurements² and also allows the rejection of short lifetime signals such as tissue autofluorescence.^{3–6}

In the last few years, quantum dots have been used as probes for biological applications^{7,8} because they combine a high resistance to photobleaching with interesting optical properties: broad absorption cross section, tunable emission wavelength (according to their size and composition) and high fluorescence quantum yields (QY). For fluorescence imaging, there is indeed an “optical therapeutic window” (from 700 to 900 nm), where the absorption and scattering of major tissue chromophores are minimum.^{9,10} In this range of wavelengths, *in vivo* fluorescence imaging has been performed due to near-infrared-emitting quantum dots (NIR QDs).¹¹ Recently, NIR QDs based on I–III–VI materials have emerged^{12–14} and exhibit a long fluorescence lifetime (around 150 ns).^{15–17} Moreover, unlike other semiconductor nanoparticles emitting in the IR (PbSe, CdTe), they are made of low toxicity materials.¹⁸ Nevertheless, the

current challenge in this range of wavelengths consists of synthesizing probes with high fluorescence QY.^{12,15,19–22} Moreover, for cell tracking applications, cells have to be loaded with numerous probes, which have to be equally distributed between the two daughter cells to preserve homogeneous population labeling.

We present here a new synthesis of NIR QDs made of low toxicity materials, emitting at 800 nm, and with fluorescence QY up to 35% in hexane. Their emission wavelength allows an excitation with a red-emitting laser, giving a better light penetration depth in tissues. The quantum dots are coated with a copolymeric ligand we recently developed,²³ which allows one to obtain bright, stable, and homogeneously distributed probes in the cell cytoplasm at least for 48 h. Furthermore, our NIR QDs exhibit a long fluorescence lifetime (around 150 ns) compared to tissue autofluorescence (<5 ns). Due to these unique properties and a time-gated detection on a widefield microscope, these QDs allow significant enhancement of the detection sensitivity of individual cells by efficiently rejecting short fluorescence lifetime signals.

2 Materials and Methods

2.1 Synthesis of NIR QDs

The synthesis of Zn–Cu–In–Se/ZnS core/shell quantum dots is inspired by Cassette et al.¹⁴ In our core synthesis, all precursors (0.4 mmol of CuCl, 0.4 mmol of InCl₃, 0.8 mmol of selenourea, and 0.8 mmol of Zn acetate) are introduced in a three-necked

*Address all correspondence to: Vincent Loriette, E-mail: sophie.bouccara@espci.fr

flask with 10 mL of octadecene (ODE) and 4 mL of trioctylphosphine (TOP), and briefly sonicated. Then, 4 mL of oleylamine (OAm) and 2 mL of dodecanethiol are added. The solution is stirred and degassed for 30 min under vacuum. The flask is then filled with argon and the solution is heated progressively up to 260°C in, typically, 10 min. Heating is stopped immediately after the target temperature is reached and the flask is cooled down to room temperature. The Zn–Cu–In–Se cores are precipitated with ethanol and then dispersed in 10 mL of hexane.

For the shell synthesis, 4 mL of as-prepared cores is dispersed in 4 mL of ODE and 1 mL of OAm into a new three-necked flask. The mixture is degassed under vacuum at 40°C. A solution of zinc ethylxanthate and zinc oleate (respectively, 0.13 mmol and 0.8 mmol) dissolved in ODE (2 mL), TOP (3 mL), and dioctylamine (1 mL) is loaded into an injection syringe. The flask is heated to 190°C and these ZnS precursors are added dropwise in 1 h under argon atmosphere. At the end of the injection, the reaction flask is cooled down to room temperature. The resulting Zn–Cu–In–Se/ZnS QDs are finally precipitated with ethanol and redispersed in 10 mL of hexane. Optical spectroscopy characterization is performed using a F900 Edinburgh spectrometer.

2.2 Solubilization in Water

The solubilization in water is performed due to a ligand exchange. Four hundreds microliters of the Zn–Cu–In–Se/ZnS QDs are precipitated with ethanol and resuspended in 100 μ L of mercaptopropionic acid overnight at 60°C. The QDs are dissolved in dimethylformamide (1 mL) and precipitated using potassium *tert*-butoxide. QDs are resuspended in basic water (sodium tetraborate 10 mM, pH 9.2) and mixed with a solution of poly(dithiol-*co*-sulfobetaine) zwitterionic ligands²³ for 12 h at 60°C. After the ligand exchange, the QDs are purified as previously described by Giovanelli et al.

using ultrafiltration and ultracentrifugation. The QDs are finally resuspended in a 20 mM aqueous solution of NaCl.

2.3 Cell Labeling

QDs are diluted in Dulbecco's modified Eagle medium enriched with 10% fetal bovine serum and 1% penicillin–streptomycin antibiotics, later referred to as complete medium. About 500,000 HeLa cells are suspended with 10 μ M of QDs in a final volume of 100 μ L in a 2-mm electroporation cuvette. The cuvette is subjected to 0.15 kV for a 30-ms pulse using a Gene Pulser (Biorad, Hercules) electroporator. The cells are rinsed five times with warm complete medium, dispersed in a nonfluorescent imaging medium (OptiMEM® with no phenol red, Life technologies, Carlsbad, California) and deposited on a microscope coverslip (25 mm in diameter). The cells are kept at least for 1 h at 37°C under a 5% of CO₂ atmosphere before imaging.

2.4 Optical Setup

The light source used for time-gated imaging (setup shown in Fig. 1) is a picosecond pulsed laser diode (Picoquant PDL 800, Berlin, Germany), emitting at 659 nm, with a 1 or 5 MHz repetition rates injected in the epi-illumination path of a commercial microscope body (Olympus BX51WIF, Shinjuku, Japan). The beam spot size and position on the sample are controlled by an external telescope and periscope. We use a 60 \times water immersion objective (NA = 1) and a 40 \times Olympus objective (NA = 0.6). We use emission filters to discriminate between the QDs fluorescence and the excitation signal. A relay achromatic pair matches the image size to the intensifier and gate surface (Picostar HRI, LaVision, Goettingen, Germany). The same relay system is placed head to tail between the intensifier and the electron multiplying charge-coupled device (EMCCD) camera (Roper QuantEM 512 C, Photometrics, Tucson, Arizona) to preserve the nominal microscope magnification factor. The laser

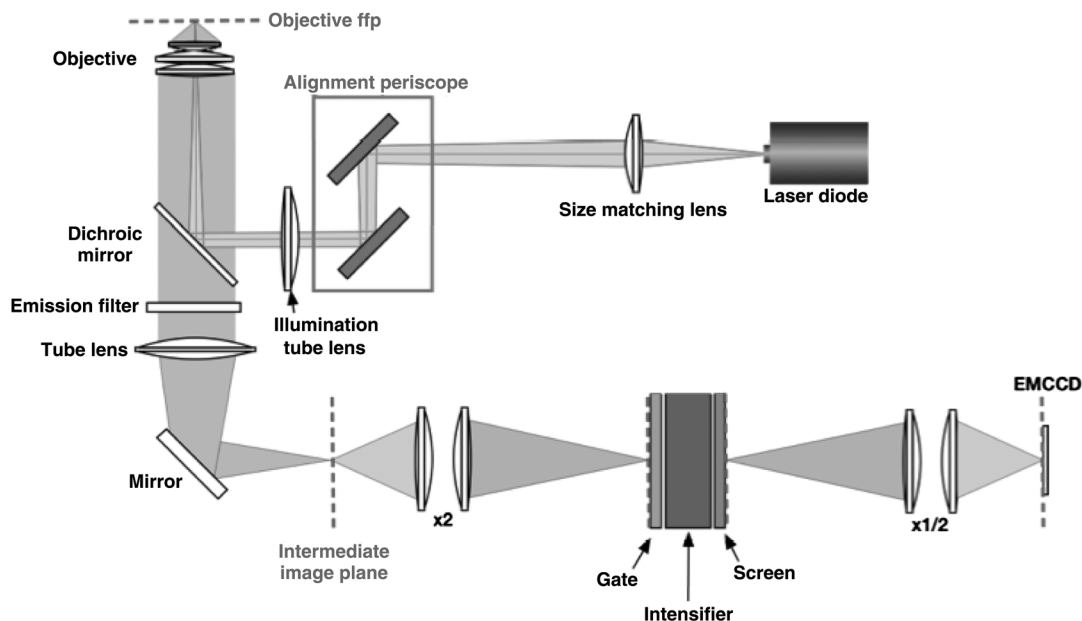


Fig. 1 Optical setup. The sample is illuminated by a pulsed laser diode with a 1 or 5 MHz repetition rate and emitting at 659 nm. The laser and the intensifier are synchronized by two phase-locked function generators.

diode and the intensifier are synchronized by two phase-locked function generators (Agilent 33120A and Agilent 33220A).

2.5 Photoluminescence Intensity Decay Measurements

The system described above can be used to carry out photoluminescence (PL) intensity decay measurements. The intensifier is used in a mode in which the gate is driven by a waveform synthesizer. This mode is suited to perform time-gated detection as well as fluorescence intensity decay measurements. PL intensity decays are measured by acquiring a sequence of images, while phase shifting a 200-ns width gate trigger signal with respect to the laser trigger, as illustrated in Fig. 2. This introduces a controllable time delay, τ , between the laser excitation and the beginning of the detection gate. Thus, for each gate position, an image is acquired. A common region of interest (ROI) for all images is selected and for each image, the average intensity of the ROI pixels is measured. The image offset, induced by the camera or by the external light sources, is eliminated by recording a sequence without laser excitation and subtracting the average of the pixel intensity of the same ROI from the original sequence. The results are then normalized to the measure obtained after the laser pulse. For fluorescence decay measurements, we typically use radio frequency gain at 30% and Micro Channel Plate gain at 700 V and an input driving peak to peak voltage of 2 V.

3 Results and Discussion

3.1 NIR QDs as Stable Probes for Cell Imaging

3.1.1 Spectroscopic characterization of NIR QDs

We have developed and optimized the synthesis of NIR emitting Zn–Cu–In–Se/ZnS core/shell QDs. Compared to the previously reported Cu–In–Se/ZnS QDs,^{14,24} we note that the incorporation of zinc during the core synthesis improves their fluorescence QY, and provided us with brighter core/shell QDs, as already noted with Zn–Cu–In–S QDs.^{13,20,25} This has been putatively attributed to defect passivation and filling of vacancy sites by Zn atoms inside the QD cores. The QD size is estimated at typically 3 nm by electron microscopy and x-ray diffraction (data not shown). The initially hydrophobic QDs are solubilized

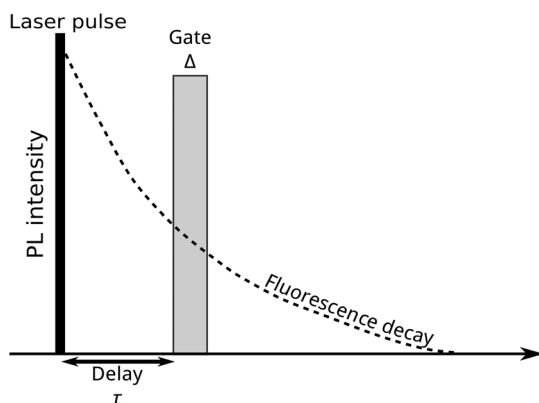


Fig. 2 Principle of photoluminescence intensity decay measurements. For each gate position, an image is acquired and the intensity of a region of interest is measured.

in water as described in Sec. 2. These ligands provide suitable long-term colloidal and intracellular stability for our NIR QDs as will be demonstrated below.

Figure 3 presents the emission spectra of our NIR QDs in hexane and water, as well as the PL intensity decays. The emission (with an FWHM of around 130 nm) is centered around 800 nm, which corresponds to the “optical therapeutic window” for *in vivo* fluorescence imaging, in which the tissue penetration is maximal.^{9,10} Fluorescence QY measurements gave typical values of 35% for QDs in hexane and 20% for QDs in aqueous solution after ligand exchange. We have observed that the emission is slightly blue shifted after ligand exchange, which could be attributed to a slight etching of the QD surface, or to better PL QY preservation of bluer-emitting QDs during the ligand exchange.

PL decays are multiexponential with a slow component, typically from 150 to 200 ns, compared to II–VI QDs, which usually decay in <20 ns.^{4,26} This slow component is dominant. It can be related to a donor–acceptor transition and defect recombination. In fact, the localization of the exciton electron on Cu atoms strongly reduces the exciton overlap in these QDs and yields longer excitonic lifetimes.¹⁵ This type of recombination also explains the broad emission spectra compared to II–VI QDs.¹⁶ A shorter component between 10 and 60 ns is

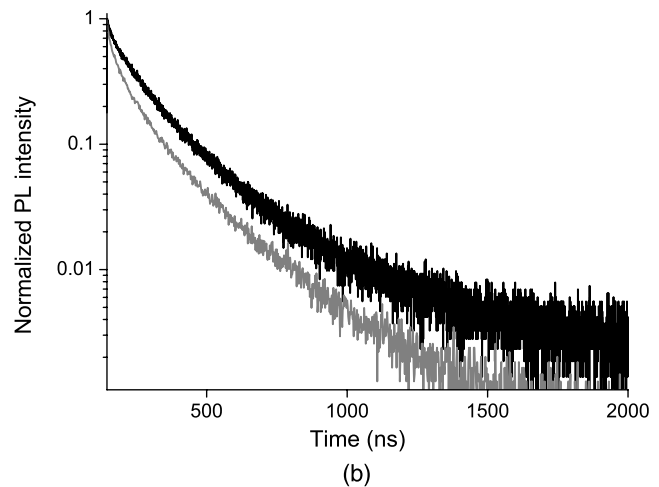
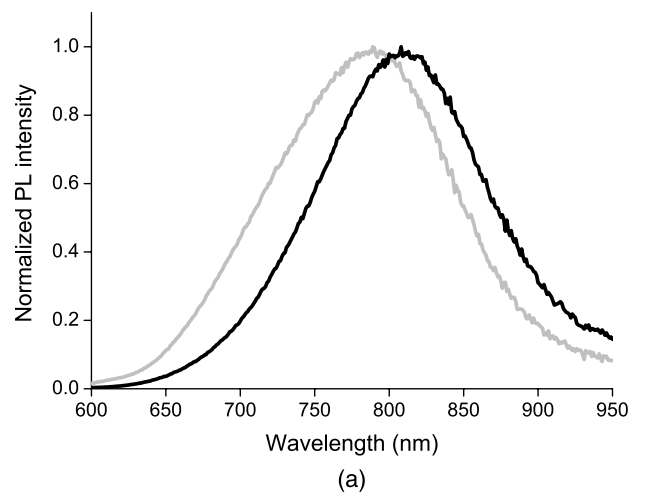


Fig. 3 (a) Normalized photoluminescence spectra. (b) Normalized photoluminescence intensity decays of near-infrared-emitting quantum dots (NIR QDs) in hexane (black) and water (gray).

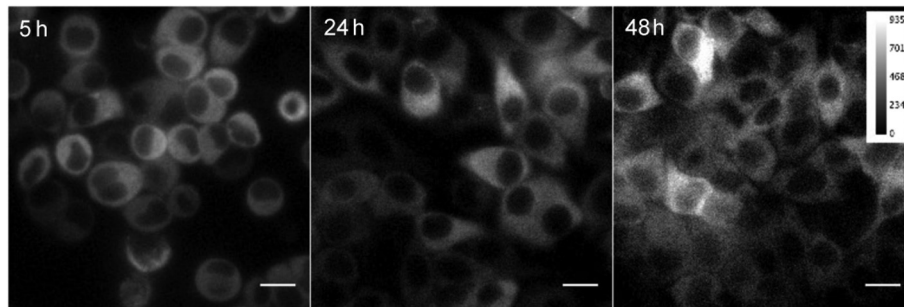


Fig. 4 Fluorescence microscopy images of HeLa cells electroporated with NIR QDs at different times after the electroporation: 5, 24, and 48 h (scale bar: 16 μm).

mainly due to intrinsic recombination of initially populated core states or surface states.¹⁶

3.1.2 Labeling of live cells and NIR QDs stability

As we aim to track cells over a few days, they need to be stained with a very high concentration of probes. Indeed, the cell division leads to a QDs dilution between two daughter cells. For this reason, we choose electroporation within the several techniques²⁷ because it allows one to obtain cells which are massively loaded with QDs in their cytoplasm.

Moreover, cell tracking experiments require highly stable intracellular probes. QDs have to remain individual and freely diffusing in order to be equally distributed in two daughter cells. Muro et al.²⁸ observed that the cytoplasmic aggregation kinetics depend strongly on the nanoparticle surface chemistry. Consequently, we have chosen to coat our quantum dots with a multidentate ligand which allows a high stability in cells for visible emitting quantum dots during several days.²³ Figure 4 shows images of living HeLa cells electroporated with NIR QDs, obtained at different times after the electroporation (5, 24, and 48 h). In order to visually compensate for the diminution of the fluorescence signal induced by QD dilution after each cell division, the intensity level of the middle image (24 h) was doubled and the level of the last image (48 h) was quadrupled according to the number of cell divisions. The original images exhibit average levels compatible with one and two division stages and no leaking of QDs. The images in Fig. 4 show that NIR QDs coated with this surface chemistry stay bright and homogeneously distributed in the cell cytoplasm for several days. Moreover, while initial free-floating cells are round (Fig. 4, 5 h), they become adherent on the coverslip the day after the electroporation (Fig. 4, 24 h). This, together with their preserved mitotic activity, is coherent with an expected low level of toxicity.²⁹

As we intend to couple these probes to a time-gated detection, we have to verify that they keep their long fluorescence lifetime in different media and in the cell cytoplasm with time. We have measured the fluorescence intensity decays on three different samples in order to observe the influence of the QDs surrounding medium on their fluorescence lifetime. The lifetime measurements have been performed as described above in Sec. 2.5. Figure 5(a) shows fluorescence intensity decays obtained for three NIR QD samples: in hexane, in water (after ligand exchange), and in the cytoplasm of living cells. We performed the same experiment to measure fluorescence decays in the cell cytoplasm at different times after the

electroporation (5, 24, and 48 h). We have fitted the fluorescence decay curves by a multiexponential curve with two major components and presented the different parameters in Table 1. The corresponding values of each parameter τ_1 and τ_2 are equatable from one curve to the other, taking into account the standard deviations.

The decay kinetics remain unchanged not only in different media [Fig. 5(a)] but also in the cell cytoplasm even after

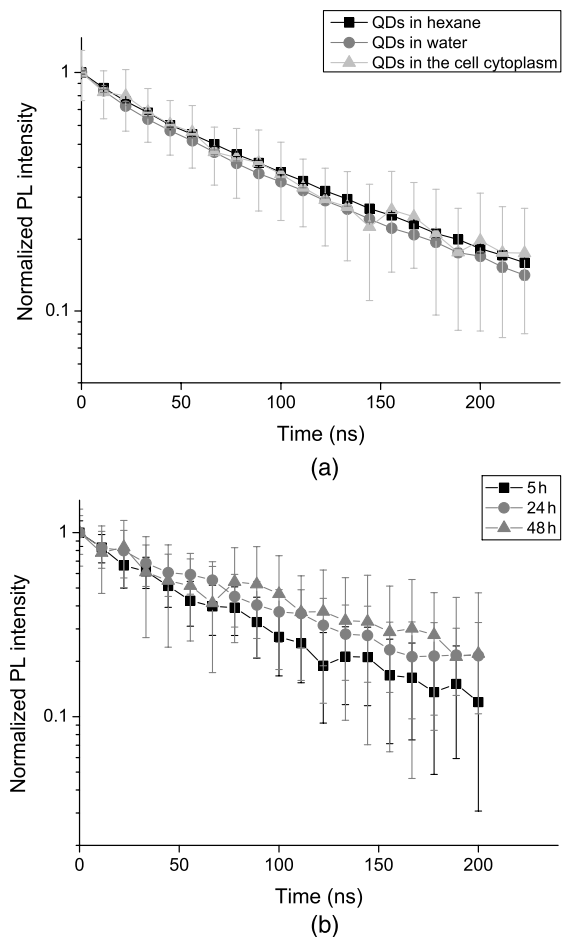


Fig. 5 (a) Normalized fluorescence intensity decay measurements of NIR QDs in different media (hexane, water, and cell cytoplasm). (b) Normalized fluorescence intensity decay of NIR QDs in the cell cytoplasm at different times after the electroporation (5, 24, and 48 h).

Table 1 Numerical values of τ_1 and τ_2 used to fit our fluorescence decay curves in Fig. 5 and their respective weights, α_1 and α_2 .

Sample	α_1	τ_1 (ns)	α_2	τ_2 (ns)
QDs in hexane	0.05	28 ± 1.8	0.95	138 ± 2
QDs in water	0.05	25 ± 1.8	0.95	134 ± 2.7
QDs in cell cytoplasm	0.15	60 ± 25	0.85	177 ± 78
5 h	0.2	39 ± 10	0.8	142 ± 35
24 h	0.15	60 ± 25	0.85	177 ± 78
48 h	0.05	31 ± 11	0.95	197 ± 37

3 days [Fig. 5(b)], reflecting the long-term stability of QDs in the cytoplasmic medium, and confirming the possibility to use them to label cells for tracking applications.

3.2 NIR QDs Coupled to Time-Gated Detection for Short Lifetime Autofluorescence Rejection

3.2.1 Proof of principle

We demonstrate the increase of sensitivity by combining time-gated fluorescence detection with cells labeled with our long PL lifetime NIR QDs. To this end, we have imaged simultaneously cells electroporated with NIR QDs and cells electroporated with NIR fluorescent beads (beads coated with NIR organic fluorophores, F8783, Invitrogen, Life technologies, Carlsbad, California) with a very short fluorescence lifetime ($\tau < 5$ ns). The cells have been rinsed, mixed together, and deposited on the same coverslip. As described in Sec. 2, we have illuminated the cells with the pulsed laser source at 1 MHz and imaged them through 200-ns gate. For this study, we did not investigate the influence of these two parameters that have been fixed arbitrarily. Each image has been acquired using a different delay τ , between the laser pulse excitation and the opening of the gate. We have varied this delay between 0 and 200 ns with 2.7 ns steps. The camera exposure duration was fixed to 150 ms. Figure 6 shows examples of time-gated images of two cells taken at delay 0, 11, 30, and 50 ns. The left cell was stained with NIR QDs and the right one with fluorescent beads. The progressive disappearance of the cell stained with the fluorescent beads (right) clearly illustrates the rejection of the short lifetime signal as the delay increases. Figure 7 is a plot of the fluorescence intensity decay of the two cells shown in Fig. 6. The signal was averaged over the central 10×10 pixels area of each cell. At zero delay, the ratio between the fluorescent beads signal and the QD signal is 2.5. At a delay of 27 ± 2.7 ns, the fluorescent beads signal goes below the noise level. This is thus the optimal delay for opening the gate. We

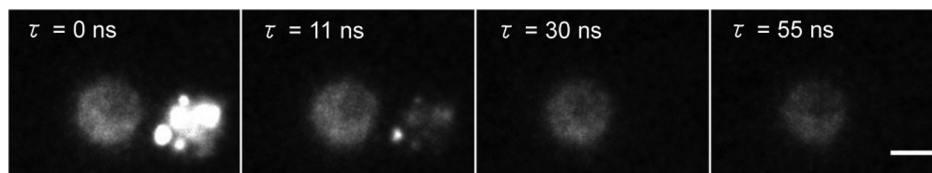


Fig. 6 Images of HeLa cells labeled with NIR QDs (cell on the left) or beads containing NIR fluorescent organic dyes (cell on the right) at different delays τ after the laser pulse. (scale bar: 10 μm).

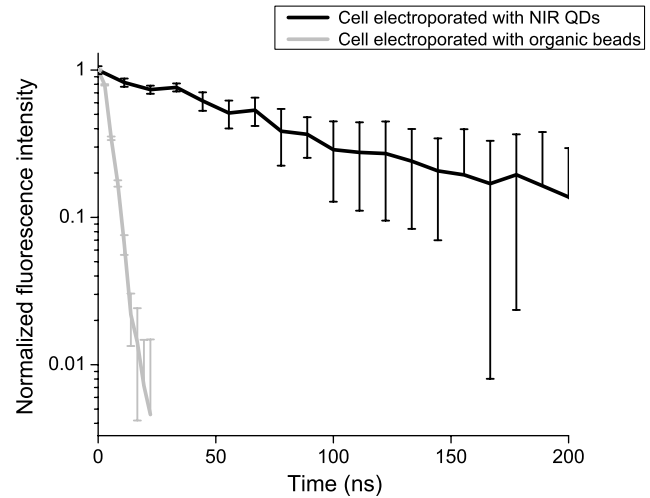


Fig. 7 Fluorescence intensity decay measurements of NIR QDs and fluorescent beads in cells.

characterized the efficiency of the gated detection by defining a parameter $R(\tau)$ which corresponds to the ratio of the signal from NIR QDs on the background noise and the spurious fluorescence signal corresponding to short lifetime signal. It can be written as

$$R(\tau) = \frac{S_{\text{QD}}(0) \exp\left(\frac{-\tau}{\tau_{\text{QD}}}\right)}{N + S_{\text{fluo}}(0) \exp\left(\frac{-\tau}{\tau_{\text{fluo}}}\right)}, \quad (1)$$

where $S_{\text{QD}}(0)$ and $S_{\text{fluo}}(0)$ are, respectively, the signal from the quantum dots and fluorescent beads at zero delay, N is the background noise level, and τ is the gate delay. N depends on the gate width but not on the delay. τ_{QD} and τ_{fluo} are the fluorescence lifetimes of QDs and short lifetime fluorophores, respectively. As long as the denominator in Eq. (1) is dominated by the spurious fluorescence, the $R(\tau)$ ratio increases as $\exp[\tau(1/\tau_{\text{fluo}} - 1/\tau_{\text{QD}})]$. If, on the contrary, the background noise is dominant, the $R(\tau)$ ratio decreases as $\exp(-\tau/\tau_{\text{QD}})$; This behavior is illustrated in Fig. 8, where we plotted R measured on the images presented in Fig. 6, as a function of the delay. The solid gray curve is a fit of the data with the function of Eq. (1). The fit allowed us to estimate the fluorescence lifetimes: we found $\tau_{\text{fluo}} = 2.7 \pm 0.3$ ns and $\tau_{\text{QD}} = 120 \pm 30$ ns and a maximum $R(\tau)$ ratio obtained at $\tau = 28$ ns. The $R(\tau)$ ratio increases by two orders of magnitude: at $R(\tau = 0 \text{ ns}) = 0.44$ and $R(\tau = 28 \text{ ns}) = 40$.

In order to quantify the time-gated detection efficiency, we define a fluorescence rejection factor as the ratio between the QD signal and the spurious fluorescence signal, normalized by the same ratio without time-gated detection. It can be written as

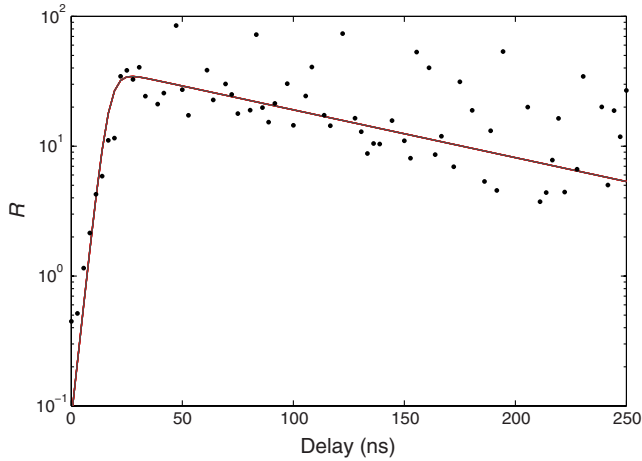


Fig. 8 Ratio R for our data (dots) and best (gray curve) fit using Eq. (1) as the fitting function.

$$G(\tau) = \frac{1 - \exp\left(-\frac{\Delta}{\tau_{\text{fluo}}}\right) \exp\left(-\frac{\tau}{\tau_{\text{QD}}}\right)}{1 - \exp\left(-\frac{\Delta}{\tau_{\text{QD}}}\right) \exp\left(-\frac{\tau}{\tau_{\text{fluo}}}\right)}, \quad (2)$$

with Δ the gate width. Using the estimated values of the lifetimes, we obtain $G(\tau = 28 \text{ ns}) = 3.4 \times 10^4$. The high value of the rejection factor is obtained due to the long fluorescence lifetime of NIR QDs in the cell cytoplasm. The optimal gate delay is fixed by spurious fluorescence level and lifetime and by the background noise level. It depends only weakly on the QDs' lifetime and can be optimized independently on the QD characteristics.

3.2.2 Ex vivo experiment

We have deposited HeLa cells previously electroporated with NIR QDs on a thin slice of *ex vivo* tissue of beef muscle. This corresponds to a situation where the QDs' signal is superimposed to the autofluorescence one, compared to the previous experiments where both the signals were spatially decorrelated. We have illuminated the sample with the pulsed laser source at 5 MHz and imaged it through a 160 ns gate width. All images have been acquired with an exposure time of 100 ms and each

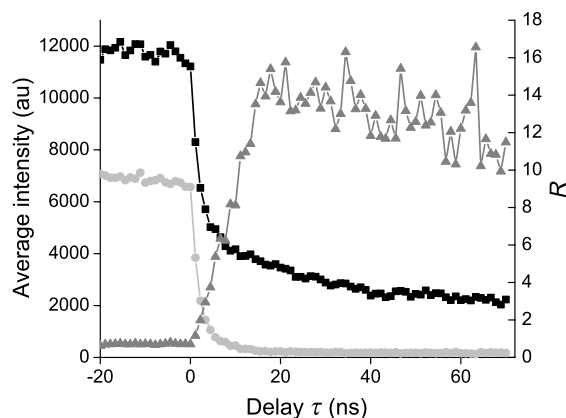


Fig. 9 Average intensity at the cell location (black squares), average intensity of the autofluorescence (gray circles), and ratio R (dark gray triangles).

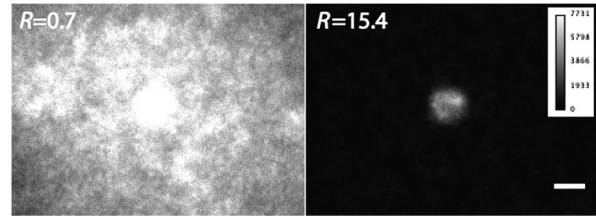


Fig. 10 Images of NIR QDs stained cell for different positions of the gate detection (scale bar: 10 μm).

image corresponds to an open gate position relative to the laser pulse at the zero delay $\tau = 0$.

Figure 9 is a plot of the average intensity at the cell location (NIR QDs and tissue autofluorescence and noise) (black curve), the average intensity next to the cell location (tissue autofluorescence and noise) (gray curve) and the ratio $R(\tau)$ as defined in the previous section.

For $\tau < 0$ ns, which corresponds to a gate that is open when the laser pulse illuminates the sample, the autofluorescence signal dominates the NIR QDs one. Thus, both the signals are nearly constant and we mainly detect signal from tissue autofluorescence. For positive values of τ , since autofluorescence has a short fluorescence lifetime (< 5 ns), its contribution falls rapidly. At $\tau = 17.7$ ns, when the autofluorescence signal falls below the noise level, R reaches its highest value: $R(\tau = 17.7) = 15.4$. This maximum represents an increase by more than an order of magnitude compared to zero delay [$R(\tau = 0) = 0.6$], demonstrating the important benefit of our system. Then, R decreases following the QDs' fluorescence decay.

Figure 10 shows images of the sample for two different time delays. On the left image, the gate opens before the laser impulsion, and both fluorescence from the cell and fluorescence from the tissue (autofluorescence) contribute to the signal. On the right image, the gate opens with a delay $\tau = 17.7$ ns after the laser pulse.

This experiment demonstrates that autofluorescence rejection through time-gated detection of long lifetime NIR-QDs exhibits performances and gain in sensitivity when a single cell is embedded within a strongly autofluorescent environment.

4 Summary

We have synthesized and characterized new biocompatible NIR QDs for *in vivo* fluorescence imaging. These probes remain stable, bright, and homogeneously distributed in the cell cytoplasm. They also keep their long fluorescence decay in different media, including in the cell cytoplasm of living cells, at least for 48 h. Due to these properties, we demonstrated that we could couple these probes to a widefield time-gated imaging and efficiently discriminate between NIR QDs emission and spurious short lifetime signals, such as autofluorescence in an *ex vivo* sample. This combination of probes and widefield time-gated detections could be functional for *in vivo* cell tracking, where the autofluorescence is the main limitation.

Acknowledgments

Part of this work was funded by "les Laboratoires Servier" and the "Investissement d'Avenir project Nano-CTC." We would like to thank Anne Simon for her help on cell culture and Aurore Bourmignault-Nuquet for her help on the instrument characterization.

References

- H. Hong et al., "Non-invasive cell tracking in cancer and cancer therapy," *Curr. Top. Med.* **10**(12), 1237–1248 (2010).
- D. Elson et al., "Biomedical applications of fluorescence lifetime imaging," *Opt. Photonics News* **13**(11), 36–32 (2002).
- R. Richards-Kortum and E. Sevick-Muraca, "Quantitative optical spectroscopy for tissue diagnosis," *Ann. Rev. Phys. Chem.* **47**, 555–606 (1996).
- M. Dahan et al., "Time-gated biological imaging by use of colloidal quantum dots," *Opt. Lett.* **26**(11), 825–827 (2001).
- A. May et al., "Whole-body, real-time preclinical imaging of quantum dot fluorescence with time-gated detection," *J. Biomed. Opt.* **14**(6), 060504 (2009).
- G. Mandal et al., "Cadmium-free quantum dots as time-gated bioimaging probes in highly-autofluorescent human breast cancer cells," *Chem. Commun.* **49**(6), 624–626 (2013).
- X. Michalet et al., "Quantum dots for live cells, in vivo imaging, and diagnostics," *Science* **307**(5709), 538–544 (2005).
- M. Bruchez, Jr. et al., "Semiconductor nanocrystals as fluorescent biological labels," *Science* **281**(5385), 2013–2016 (1998).
- Q. Ma and X. Su, "Near-infrared quantum dots: synthesis, functionalization and analytical applications," *Analyst* **135**(8), 1867–1877 (2010).
- J. Frangioni, "In vivo near-infrared fluorescence imaging," *Curr. Opin. Chem. Biol.* **7**(5), 626–634 (2003).
- S. Kim et al., "Near-infrared fluorescent type II quantum dots for sentinel lymph node mapping," *Nat. Biotechnol.* **22**(1), 93–97 (2004).
- L. Li et al., "Highly luminescent CuInS₂/ZnS core/shell nanocrystals: cadmium-free quantum dots for in vivo imaging," *Chem. Mater.* **21**(12), 2422–2429 (2009).
- T. Pons et al., "Cadmium-free CuInS₂/ZnS quantum dots for sentinel lymph node imaging with reduced toxicity," *ACS Nano* **4**(5), 2531–2538 (2010).
- E. Cassette et al., "Synthesis and characterization of near-infrared Cu–In–Se/ZnS core/shell quantum dots for in vivo imaging," *Chem. Mater.* **22**(22), 6117–6124 (2010).
- L. Li et al., "Efficient synthesis of highly luminescent copper indium sulfide-based core/shell nanocrystals with surprisingly long-lived emission," *J. Am. Chem. Soc.* **133**(5), 1176–1179 (2011).
- H. Zhong et al., "Controlled synthesis and optical properties of colloidal ternary chalcogenide CuInS₂ nanocrystals," *Chem. Mater.* **20**(20), 6434–6443 (2008).
- T. K. C. Tran et al., "Time-resolved photoluminescence study of CuInS₂/ZnS nanocrystals," *Adv. Nat. Sci.: Nanosci. Nanotechnol.* **1**(2), 025007 (2010).
- A. L. Rogach et al., "Infrared-emitting colloidal nanocrystals: synthesis, assembly, spectroscopy, and applications," *Small* **3**(4), 536–557 (2007).
- B. Chen et al., "Highly emissive and color-tunable CuInS₂-based colloidal semiconductor nanocrystals: off-stoichiometry effects and improved electroluminescence performance," *Adv. Funct. Mater.* **22**(10), 2081–2088 (2012).
- J. Zhang, R. Xie, and W. Yang, "A simple route for highly luminescent quaternary Cu–Zn–In–S nanocrystal emitters," *Chem. Mater.* **23**(14), 3357–3361 (2011).
- H. Nakamura et al., "Tunable photoluminescence wavelength of chalcopyrite CuInS₂-based semiconductor nanocrystals synthesized in a colloidal system," *Chem. Mater.* **18**(14), 3330–3335 (2006).
- P. M. Allen and M. G. Bawendi, "Ternary I–III–VI quantum dots luminescent in the red to near-infrared," *J. Am. Chem. Soc.* **130**(29), 9240–9241 (2008).
- E. Giovannelli et al., "Highly enhanced affinity of multidentate versus bidentate zwitterionic ligands for long-term quantum dot bioimaging," *Langmuir* **28**(43), 15177–15184 (2012).
- J. Park et al., "CuInSe/ZnS core/shell NIR quantum dots for biomedical imaging," *Small* **7**(22), 3148–3152 (2011).
- L. De Trizio et al., "Strongly fluorescent quaternary CuIn–Zn–S nanocrystals prepared from Cu_{1-x}InS₂ nanocrystals by partial cation exchange," *Chem. Mater.* **24**(12), 2400–2406 (2012).
- J. A. Kloepfer, S. E. Bradforth, and J. L. Nadeau, "Photophysical properties of biologically compatible CdSe quantum dot structures," *J. Phys. Chem. B* **109**(20), 9996–10003 (2005).
- A. Derfus, W. Chan, and S. Bhatia, "Intracellular delivery of quantum dots for live cell labeling and organelle tracking," *Adv. Mater.* **16**(12), 961–966 (2004).
- E. Muro et al., "Comparing intracellular stability and targeting of sulfobetaine quantum dots with other surface chemistries in live cells," *Small* **8**(7), 1029–1037 (2012).
- M. Helle et al., "Visualisation of sentinel lymph node with indium-based near infrared emitting quantum dots in a murine metastatic breast cancer model," *PLoS One* **7**(8), e44433 (2012).

Sophie Bouccara is currently a PhD student at the Laboratoire de Physique et d'Étude des Matériaux. She received her MSc in optics for biomedical applications from the Université Pierre et Marie Curie in 2011. Her research focuses on the combination of the synthesis of near-infrared fluorescent biological probes with time resolved widefield microscopy in order to follow metastatic cells migration *in vivo*.

Alexandra Fragola is an assistant professor at Pierre et Marie Curie University, where she obtained a PhD in 2003 under the supervision of Claude Bouccara and Lionel Aigouy in near-field microscopy. At the Laboratoire de Physique et d'Étude des Matériaux, she is currently developing super-resolution fluorescence microscopes for live cell and *in vivo* imaging, using time-gated detection, structured illumination techniques, and adaptive optics.

Emerson Giovannelli is currently a teaching assistant in the quantum dot group of the Laboratoire de Physique et d'Étude des Matériaux at ESPCI ParisTech. He graduated from the French Grande Ecole Chimie ParisTech, together with a MSc in organic chemistry from University of Paris VI (2003), and received his PhD from University of Paris XI (2008). His research focuses on quantum dots' surface chemistry and functionalization for water solubilization and *in vivo* applications.

Gary Sitbon is currently a PhD student at the Physics and Materials Study Laboratory, Paris. He received his Msc in nanomaterials science from Pierre et Marie Curie University, Paris, in 2011. His current research focuses on the synthesis of magnetic and fluorescent nanocrystals for biomedical applications in order to guide the surgical intervention.

Nicolas Lequeux is a professor of solid chemistry at the Ecole Supérieure de Chimie et Physique Industrielles de Paris. He received a PhD degree from University Paris-Sud (1990) and has been at ESPCI since 1991. His research focuses on chemistry of materials (ceramics and cements) and more recently on inorganic nanoparticle synthesis and functionalization.

Thomas Pons is a research scientist at the Laboratoire de Physique et d'Étude des Matériaux. He received his PhD in 2004 from Université Pierre et Marie Curie under the supervision of Jerome Mertz. After a postdoctoral fellowship at the Naval Research Laboratory under the direction of Hedi Mattoussi, he joined the LPEM where he is currently developing multifunctional quantum dot and nanoparticle probes for biological applications, including cellular and *in vivo* imaging.

Vincent Loriette is a research scientist at the Laboratoire de Physique et d'Étude des Matériaux. He received his PhD in astrophysics in 1995 from Université Denis Diderot under the supervision of Claude Bouccara. Until 2007, he was developing the optical metrology instruments for the Virgo project (gravitational wave detector). He is currently developing fluorescence microscopes with the extended spatial resolution or wide field optical sectioning properties.